

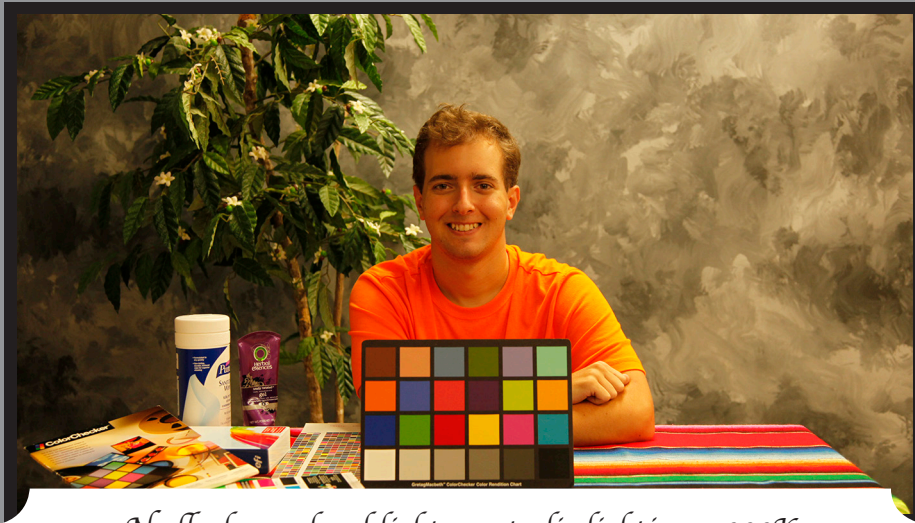
GREY BALANCE

BY MELANIE MOHER

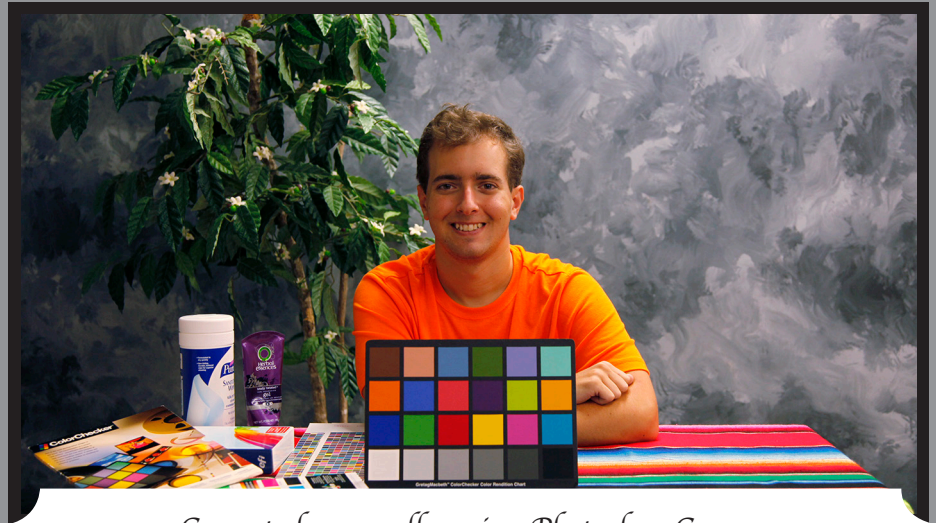
Before



After



No flash, overhead light, no studio lighting, 9000K



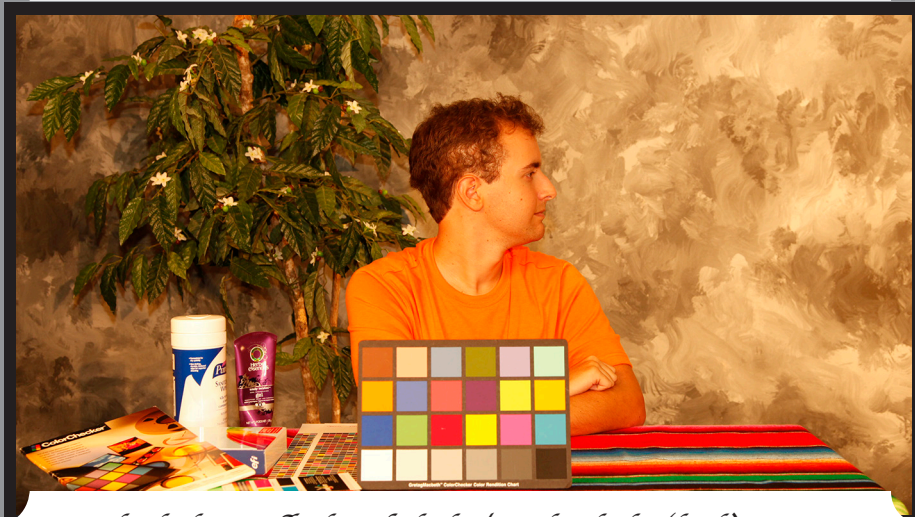
Corrected manually using Photoshop Curves



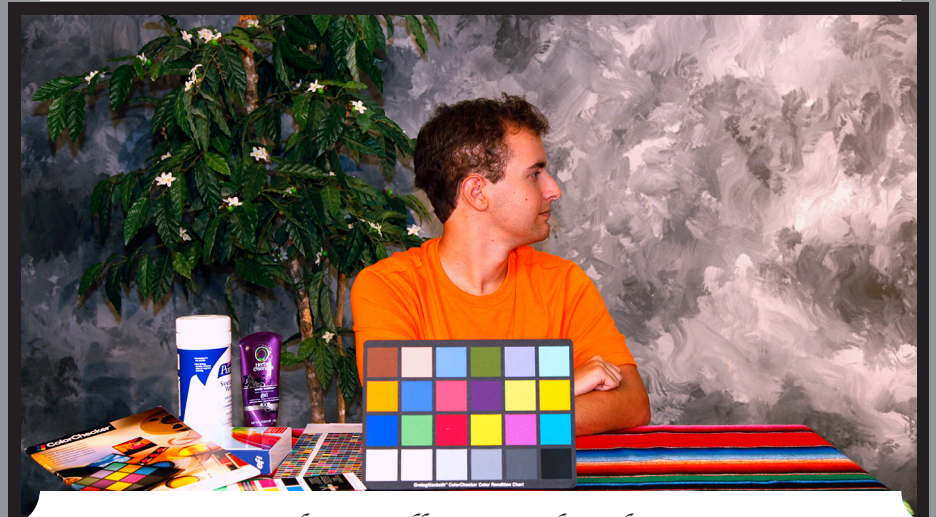
No flash, studio light, safe light, 5000K



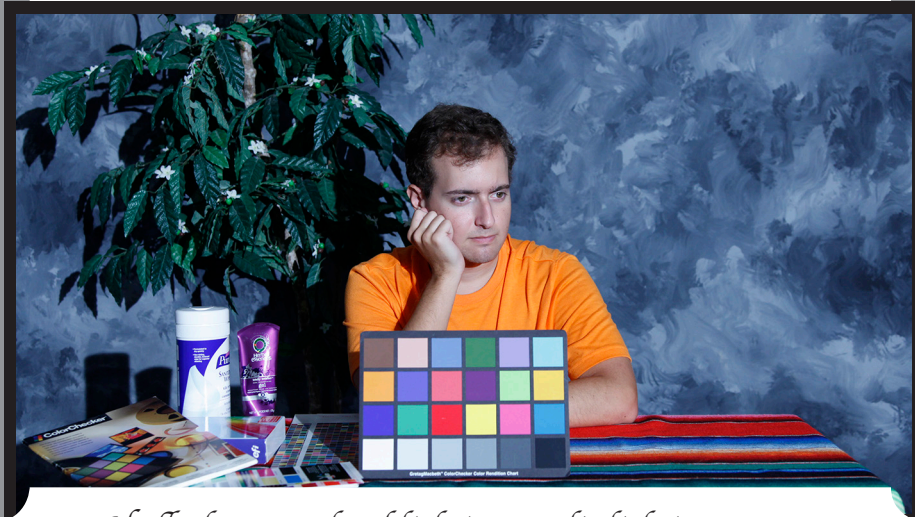
Corrected manually using Photoshop Curves



Studio lighting, flash, safe light/regular light (both), 10000K



Corrected manually using Photoshop Curves



No flash, no overhead lighting, studio lighting, 2500K



Corrected manually using Photoshop Curves



No flash, safe light, studio light, 2500K



Corrected manually using Photoshop Curves