



Halftone: no dot gain curve
Angle: Black 45°



Halftone: 20% dot gain curve
Angle: Black 45°



Uncomp/Comp
Tone Scales
@ 133 lpi
and 45°



Colorful Duotone
Angles: Black 45°, 144 CVC 75°



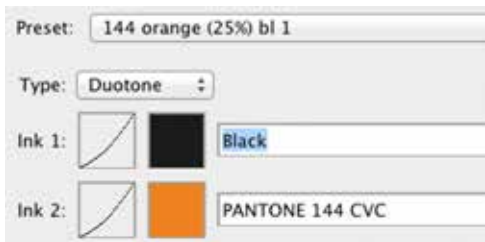
Comp
Tone Scale
@ 150 lpi
and 45°



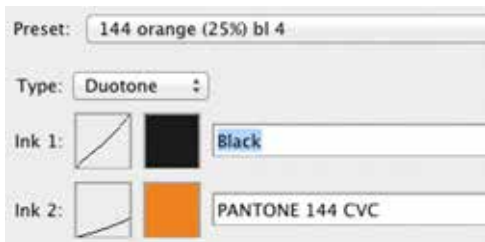
Subtle Duotone
Angles: Black 45°, 144 CVC 75°

Press Test for Ryobi 3302 HA

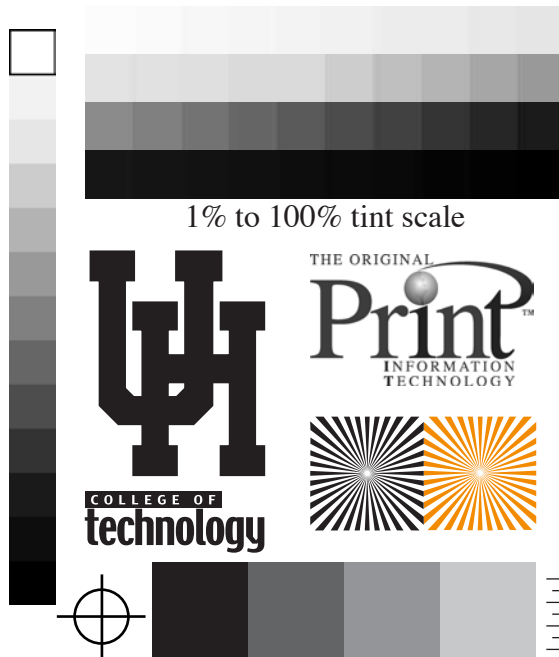
This press sheet is a press test to determine dot gain, print contrast, and the visual appearance of halftones and subtle and colorful duotones as described above. All the photos printed at 133 lpi with a standard dot gain curve of 20% applied (except as indicated).



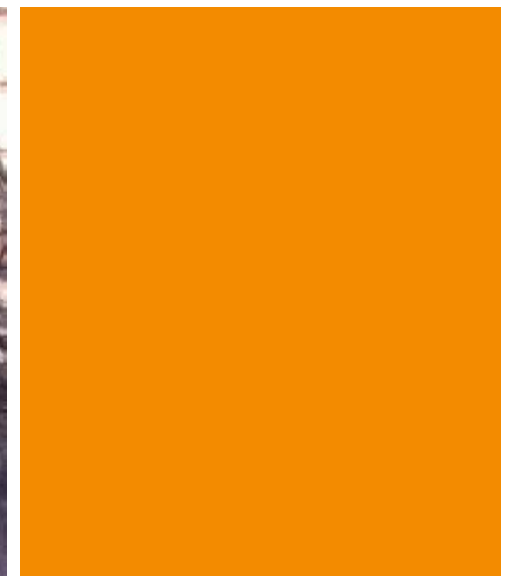
Colorful Duotone Curve



Subtle Duotone Curve



CMYK Separation



PMS number 144 CVC